

METAMORA ASSOCIATION FOR HISTORIC PRESERVATION

NEWSLETTER

Visit our Website at
www.historicmetamora.com

June 2014

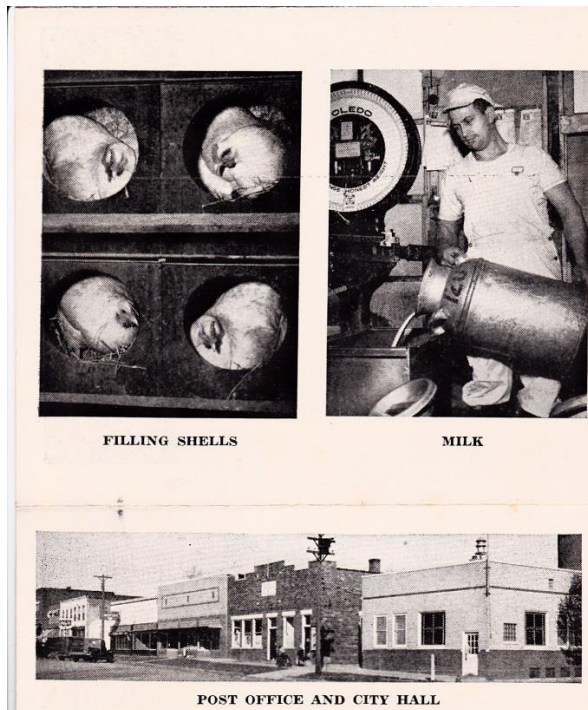


Scenes from World War II Metamora...

Cannon Recycled



In 1921 a cannon was added to the park. It was an 1861 German model that had been captured in World War I. It was later removed and melted down and used again in World War II.



How Many People Do
You Recognize?



CHRISTIAN UNION CHURCH



LOOKING WEST FROM WATER TOWER



LOOKING EAST FROM WATER TOWER



ST. MARY'S CHURCH

PHOTOS BY GEO. SOMMER



HOMeward BOUND



SURGICAL DRESSING CLASS

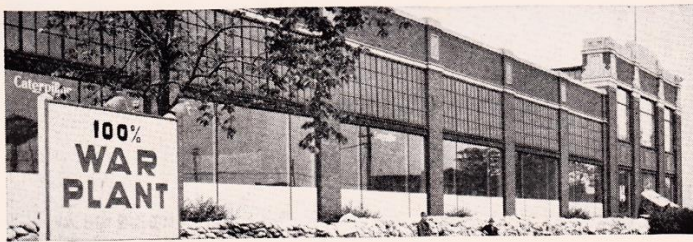
During WW II, the Metamora Lions Club commissioned George Sommer to take pictures of familiar scenes around town. These pictures were assembled and sent to servicemen overseas. This book, sent to Vincent Heinz in Italy in 1944, is on display at the Stevenson House.



METAMORA PACKING COMPANY



EARLY MORNING SHIFT ENROUTE TO PEORIA WAR INDUSTRIES



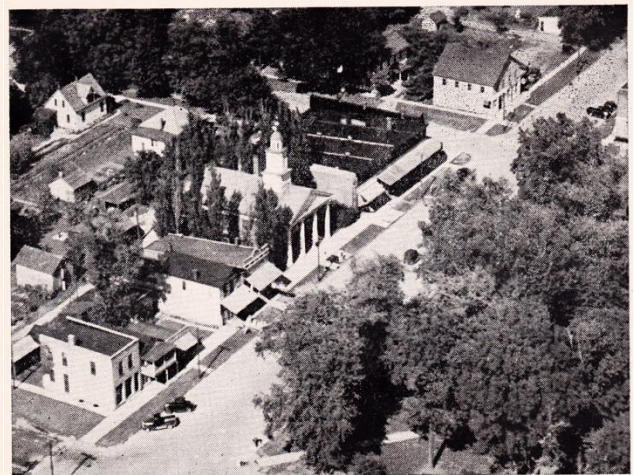
CATERPILLAR AT TIME OF SPRING FLOOD



LE TOURNEAU INDUSTRIAL PLANT



DEDICATED TO THE MEN OF THE ARMED FORCES



METAMORA'S LINCOLN SHRINE

SHARE YOUR PICTURES!

If you have pictures from World War 2 that you would like to share, we would love to have them. They can be scanned at the Jim Maloof office, 119 E Partridge, next to the Metamora post office, during the week. (Ask for Jack.) We promise to return them to you in good shape and if you'll bring in a thumb drive, we'll put copies on it for you.

Thanks, Metamora Association for Historic Preservation