



Like us on [Facebook](#) (Ctrl+click here)

Visit our [Website](http://www.historicmetamora.com) at www.historicmetamora.com

Ever wonder what was going on in Metamora 100 years ago – 1923? Maybe Mom or Dad or Grandad or Grandma were just starting their lives. Anyway, if they read the Metamora Herald, here's some of what they would have found.

You might also wonder what a can of beans that costs a dime in 1923 would cost today? Well, here's how to find out... The dollar has had an average inflation rate of 2.90% per year between 1923 and today, producing a cumulative price increase of 1,649.53%. This means that today's prices are 17.56 times as high as average prices since 1923, according to the Bureau of Labor Statistics consumer price index. So that 10 cents might seem like a great deal, but.... Good old days...?? Maybe... but maybe not!?

**CITIZEN'S
PRIMARY BALLOT**

Village of Metamora, County of
Woodford, State of Illinois. Elec-
tion March 13, 1923.

OTTO F. GIEHL, Village Clerk.

For Village President

JOHN C. SNYDER

For Village Trustees
(Vote For Three)

JOHN SHARICK

P. C. BELSLY

FRANK C. SMITH

For Precinct Committeeman

Canned Foods Week
MARCH 3-10

Companion Beans	10c
Heinz baked beans	10c and 14c
Rite-Way beans	13, 2 for 25c
Blue Ribbon beans	13, 2 for 25c
Bess milk small size	5 for 26c
Carnation, Pet, Libby's	4 for 26c
Tall cans	2 for 26c
Companion Corn	12c
Royal Taste corn	10c
Rite-Way Corn	15c
Fancy Maine Corn	15c
Salmon 1-2 lb. cans	10, 15 and 25c
Salmen 1 lb cans	15, 28 and 32c
Peas	15, 20, 23, 25 and 30c
Jo-Beth macaroni	8c, 2 for 15c
Good Cocoa full pound	15c
40-2 Coffee	38c
Turkey, Sunlist and Desota	33c
Bulk	25 and 30c

5 percent less on orders totaling \$1 or over.

Phone 55 **GIEHL'S** Phone 55

BAKERY AND GROCERY

Let's figure this out...

Beans at 10 cents x 17.56 = \$1.76 today
Corn at 12 cents x 17.56 = \$2.11 today
And you could save an extra 5% if your order was a \$1 or more!!

Remember that many folks had a garden and maybe some chickens.

The village was in good hands!!

FARM BARGAINS

For early spring sale. 40 acres, \$8000.; 70 acres \$10,000; 100 acres \$7,500; 120 acres \$22,000; 190 acres \$28,500; 164 acres, \$50,000; 887 acres, \$50.00 an acre.

Above farms are all improved, and located near Metamora, Ill. AND PRICED TO SELL.

J. O. MALONE
METAMORA, ILLINOIS

Let's see...

40 acres at \$8,000 = \$3,512/acre today
100 acres at \$7,500 = \$13,170/acre today
887 acres at \$50/acre = \$878/acre today

Wish Grandpa had hung on to the farm! But farming with horses and even with relatively modern power equipment it was a hard job.

Victory Bonds of the Series A to F are Called for Redemption Dec. 15

War Savings Stamps [1918 Series] are due January 1 1923

CENTRAL ILLINOIS LIGHT CO.

Accepts these Bonds at par and Interest and War Savings Stamps at par [5.00 each]

Convert your Bonds and Stamps, now, into Central Illinois Light Company 6 percent Preferred Stock--- nets 6.67 percent with Safety.

Tax free here Payable quarterly
\$90 cash or \$10 per share per month
Ask any Employee or any of our 1500 Shareholders

Phone 30 Ring 3 and a Representative will call. Ask for Mr. Kice

Sounds like a pretty good deal. Wonder if any of those WW1 bonds are still available - 6.67% and tax-free! Sign us up!

Spring is Just Around the Corner

We are ready. Are you? Our floor is loaded with samples of farm machinery. A complete line of International goods, including tractors and trucks.

Poultry Goods Too

For the poultry raiser we are showing Reliable and Queen incubators, brooders, both coal and oil burners.

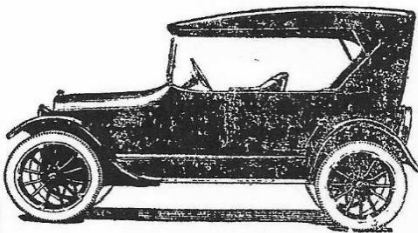
Make This Your Seed House

We have in stock good clean tested clover, timothy and alfalfa seed. We are quite proud of the reputation of our seed department.

Firestone Tires

A complete stock of Firestone tires and tubes in all sizes.

The Chevrolet



\$525 F. O. B. Detroit
Belsly & Belsly

EASTER APRIL 1ST

Easter is spring dress-up time. Fit yourself out at this store. Everything in men's, boys' and children's attire. Dress goods and furnishings too for the ladies.

New Oxfords and Shoes

Are coming in. New styles, as well as the staple and more comfortable kind in Ladies', men's and children's spring oxfords and shoes.

We have a Special on Head Light Overalls

Domestic and sheetings and tubings 1-4 bleached half bleached and unbleached 58c per yd. for ten days only.

Coöper underwear. Armor Plate hosiery.

Eaco and White Swan flour

Chase & Sanborn coffee

J. W. MILLER

The Cash Store

Metamora, Ill.



LOOK!

Did you know you can have a complete

Delco-Light

installation including wiring and Fixtures for

\$342.50

Write or phone for a demonstration in your own home.

See us for Radio outfits. Wiring and electric installation.

Garber Radio-Electric Co.

Why Worry---

—over the safety of valuable papers, jewelry and keepsakes, when for the trifling expenditure of 1-2 cent a day, you can rent a Safe Deposit Box in our strong fire and burglar-proof vault?

Convenience, protection and peace of mind—all three for

\$2.00 a year.

Metamora State Bank
Metamora, Illinois

No More Taxes

That's the Profitable news to every investor in this business

No State, County, City Taxes or no Federal Normal Income Tax on

CENTRAL ILLINOIS LIGHT CO.

6.67%

Preferred Shares

Ask our Employees---They'll tell you

Midget
THEATRE
Sunday, Jan. 14
Wallie Reid-Theo. Roberts
 in
Across The Continent
 100% picture
 10 & 30c plus tax

Tues. Jan. 16
Thomas Meighan
 in
BACHELOR DADDY
 Also Haunted Spooks—Comedy
 A Real Family Show
 Kids, 10c; Single Adults, 30c
 On this night we will admit
 the whole family for 50c
 Show starts at 8 p.m.

Wonder what that bag of popcorn and a Coke cost?

METAMORA MARKETS	
Hogs	\$8.40
Wheat	1.15
Corn	.65
Oats	.40
Butter	.40
Eggs	30
Lard	.12
Hens	.20

Converting to todays prices...

Hogs - \$147.50
 Wheat - \$20.19
 Corn - \$11.41
 Oats - \$7.02
 Butter - \$7.02
 Eggs - \$5.27
 Hens - \$3.51

BOTTOM LINE: Thanks to modern farmers for their ability to more efficiently produce what we eat at (relative to 1923) affordable prices!

H. J. TRAPP. D. V. M.
*Veterinary Physician
 and Surgeon*

Hospital Service
 Phone No. 98 - Metamora, Ill.

UNDERGROUND RAILROAD BOOK IN METAMORA AVAILABLE – It’s a fascinating account – and little known - that details the significant participation of Metamora area abolitionists in the Underground Railroad – in their own words!! You can pick up a copy (\$10) at Commerce Bank, the Metamora Library, Timeless Treasures (east side of the Square) – or we’ll send you one if you send your name and mailing address to Metamora Association for Historic Preservation, PO Box 264, Metamora 61548. Be sure to include your name, mailing address, and a check payable to Metamora Association for Historic Preservation for \$15. Thanks!

Been Reading... about Southern spies in the “Old Northwest” – Illinois, Indiana, Ohio – during the Civil War. It’s a much different perspective of extreme measures that each side took to win the war. And we think things are discombobulated today! Virtually nothing was off the table as Southern sympathizers sought to encourage desertion, resist the draft, and even form armed groups to free southern POWs and overwhelm local Federal authorities .

Contact Us

Questions, ideas - Love to hear from you

Laure Adams, President, 369-2353 or jrfarmer@mtco.com; Dave Pohlman, Vice President 369-3290; pohlman46@yahoo.com 367-4426; Jim Efaw, Secretary, 367-6099 or jimefaw-mahp@eggroll.com; Jack Weddle, Treasurer, 645-0963, jweddle@mtco.com; Board members: Lee Summer, 367-4059, 635-0259, lsummer@mtco.com; Mary Curry, 367-2185, curry@mtco.com; Rick Lotz, 648-2010, lots@mtco.com